

Connecting to WiFi on a Win 7 Laptop

WPS_WiFi is the name of the Westborough School district's wireless local area network.



1

Click on the WiFi icon



on the bottom taskbar of your desktop.

Connecting to WiFi on a Win 7 Laptop

Right click on **WPS_WiFi** and choose connect.

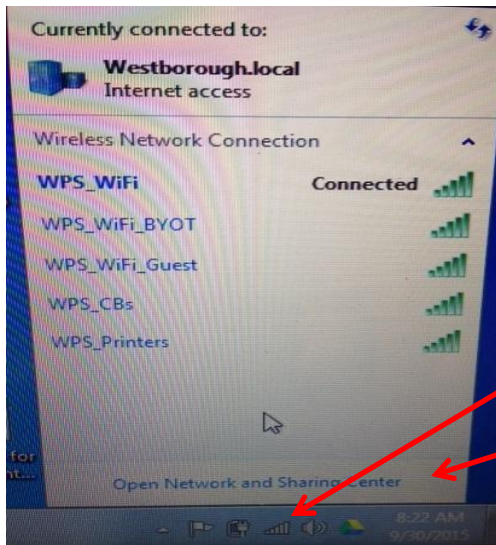


2


You will be prompted to enter your school network login username and password.

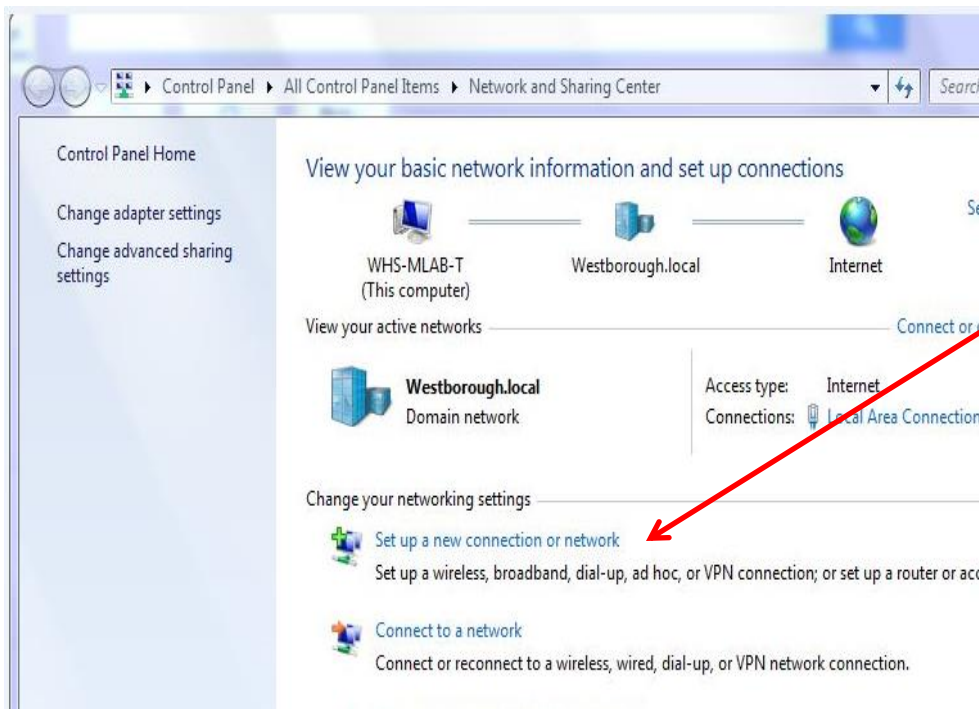
Click:OK

If you are not able to connect to the WPS_WiFi continue with the following directions:



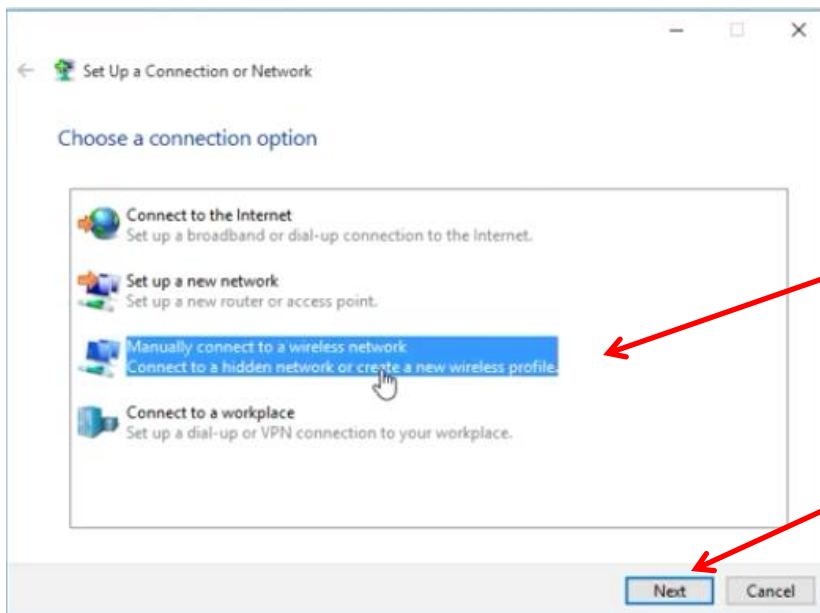
1

Click on the WiFi icon
 on the bottom taskbar of your desktop.
Then Click: Open Network and Sharing Center



2

Click-“Set up a new connection or network”



3

Click: “Manually connect to wireless network”

4

Click: Next

Manually connect to a wireless network

Enter information for the wireless network you want to add

Network name:

Security type:

Encryption type:

Security Key: Hide characters

Start this connection automatically

Connect even if the network is not broadcasting

Warning: If you select this option, your computer's privacy might be at risk.

5

Network Name:

WPS_WiFi

6

Make sure these two boxes have this content

7

Click: Next

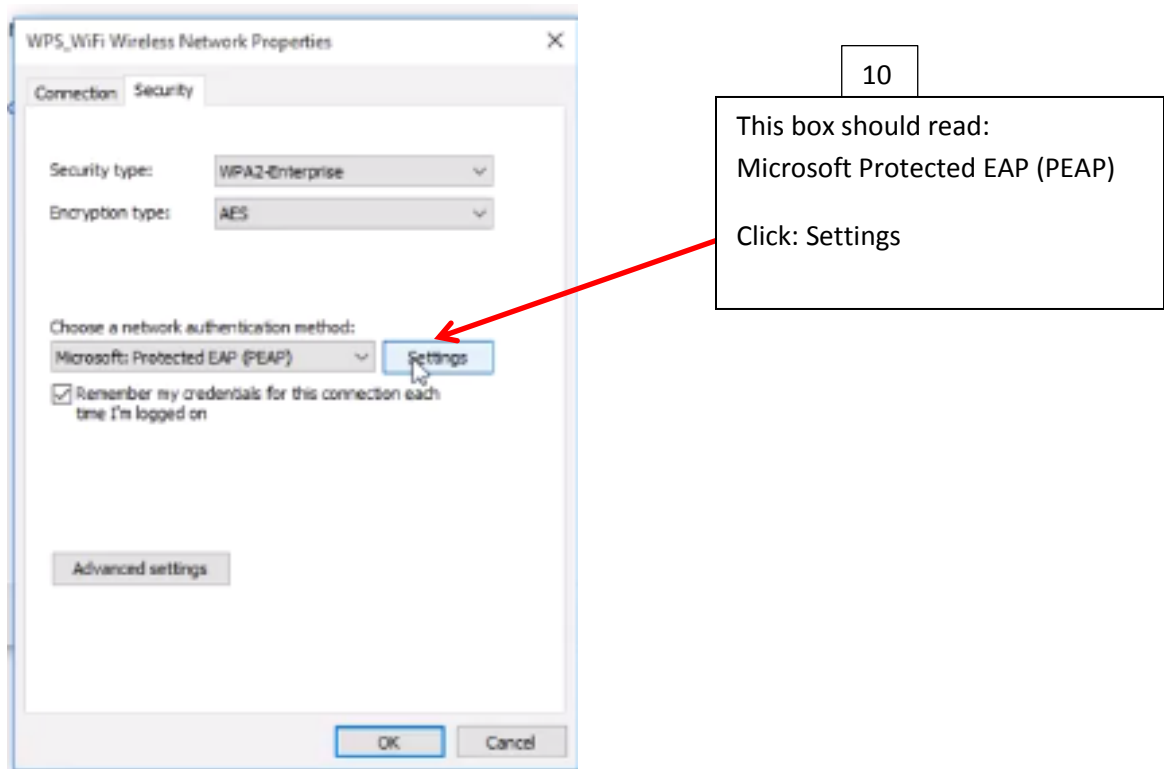
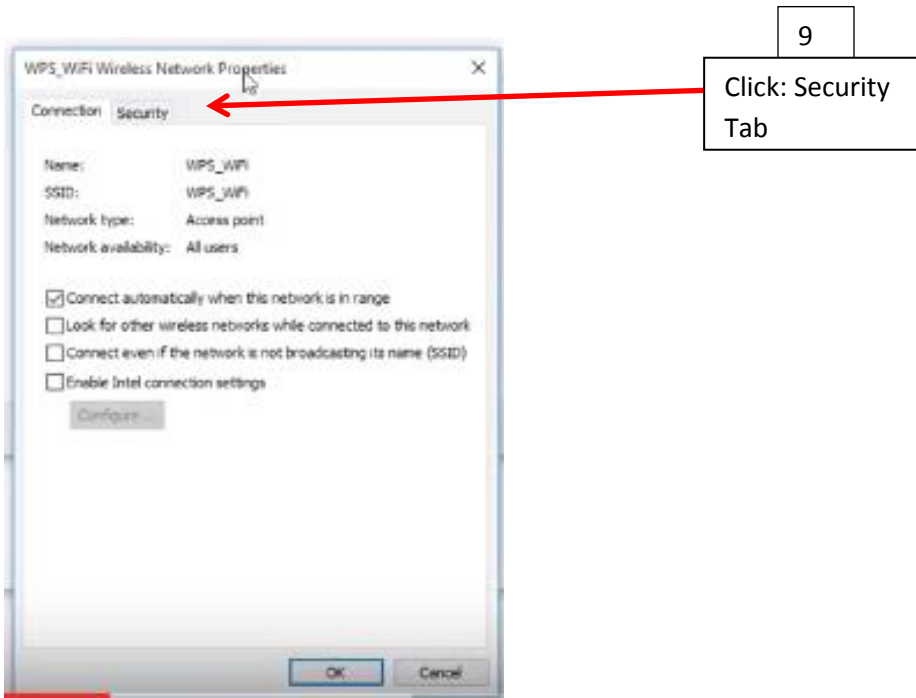
Manually connect to a wireless network

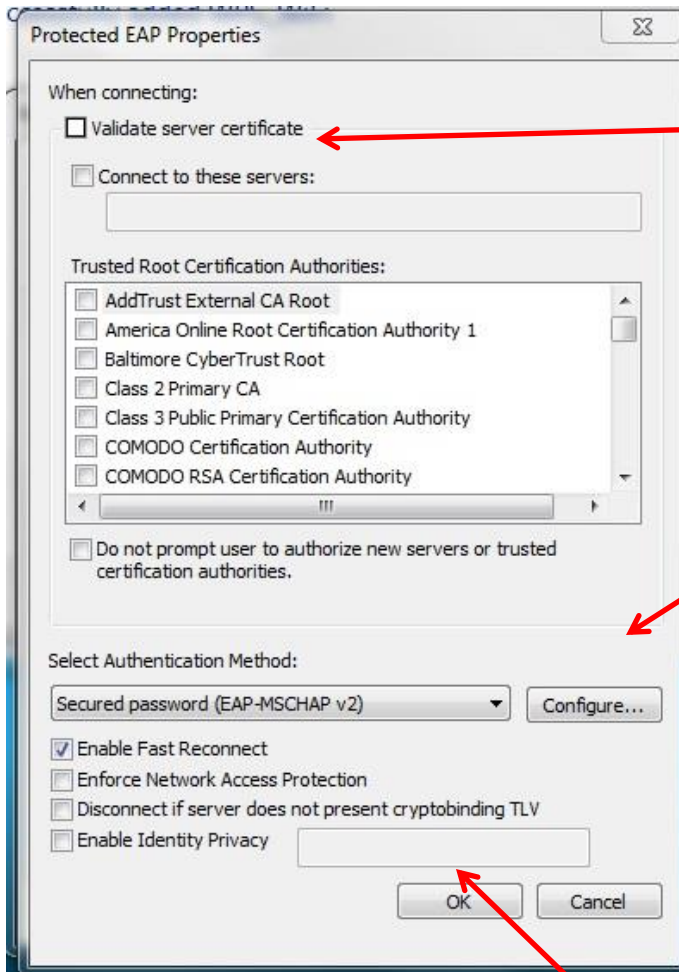
Successfully added WPS_WiFi

→ [Change connection settings](#)
Open the connection properties so that I can change the settings.

8

Click-Change Connection settings



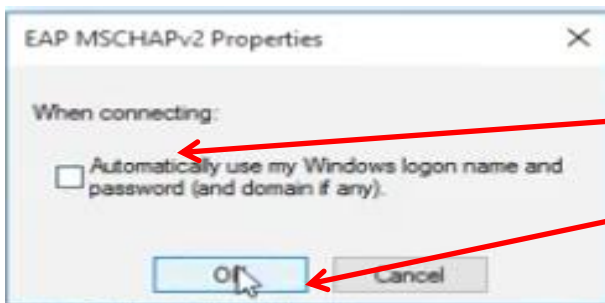


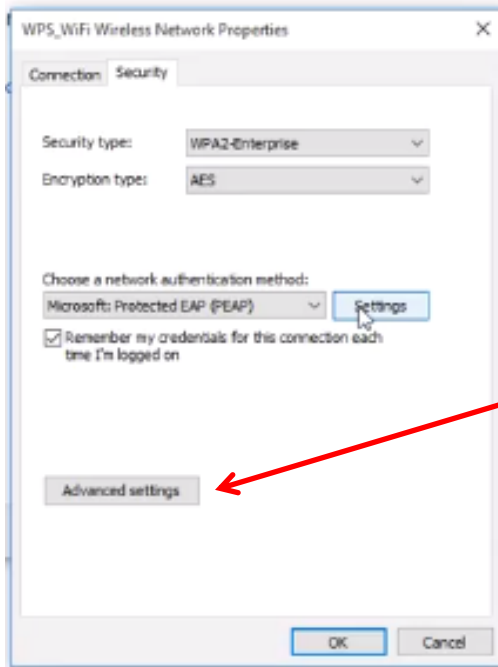
11
Make sure this box is unchecked

12
Click: Configure

13
Make sure this box is unchecked and Click: OK

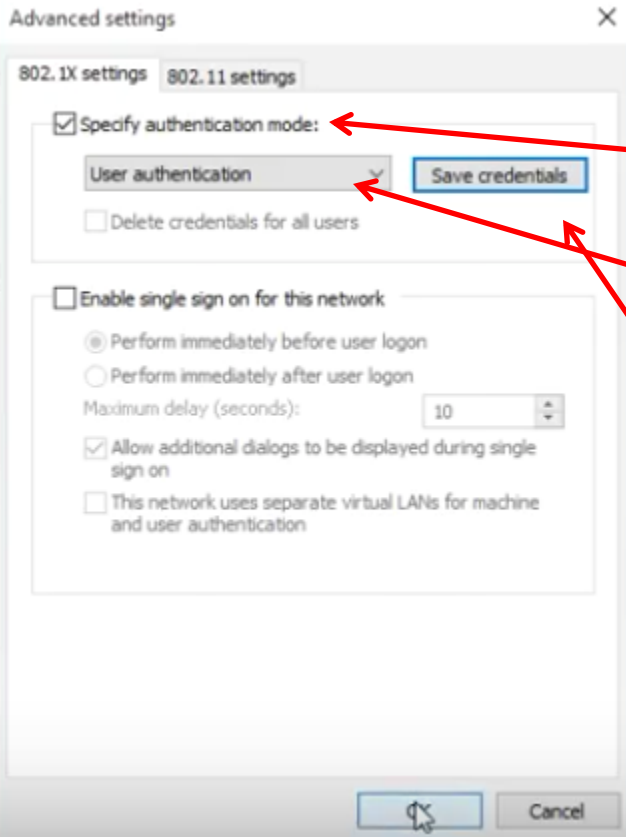
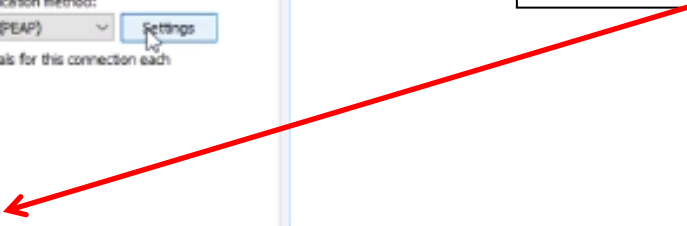
14
Click: OK





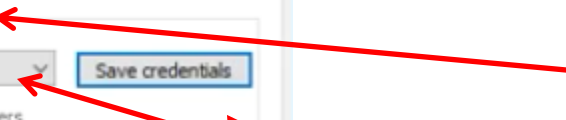
15

Click: Advanced Settings



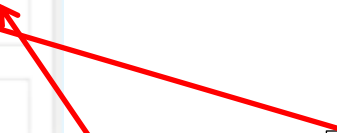
16

Must be checked



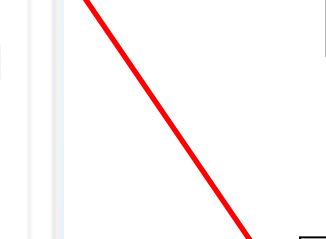
17

Must contain this title

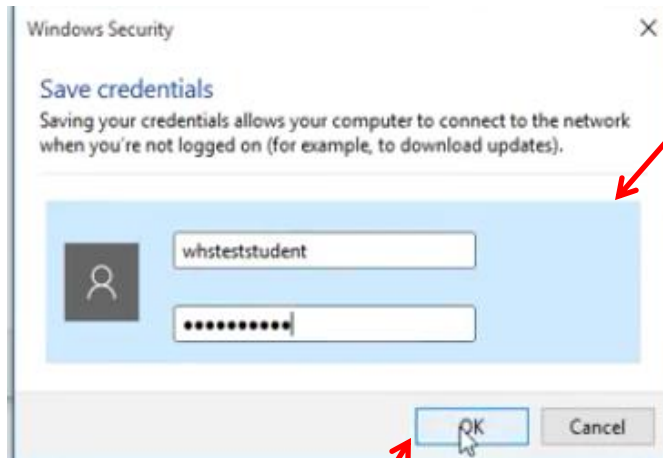


18

Save Credentials



19



Enter your network
username and
password

Click OK, Close and "x" out of all open windows

20

To Check your WiFi Connection:

Click on the WiFi icon on the bottom taskbar of your desktop.

Right click on WPS_WiFi and choose connect.



You will be prompted to enter your school network login username and password.

